

# Alaska Department of Fish and Game

Habitat Section  
Southeast Region



## 191-10-11400 Tributary 2

## ADDITION

**Water body name:**

**Survey date:** 6/15/2024

**Quad:** Bering Glacier A-4

**Species & Lifestage:**

**Upper Reach Latitude:** 60.068596 **Longitude:** -142.424029

**Survey crew:** NJ, GA, FC

**Lower Reach Latitude:** 60.068370 **Longitude:** -142.427433

**Findings:** We surveyed this uncataloged stream up to where the stream went dry using a backpack electrofisher, baited minnow traps, and GPS and captured juvenile coho salmon, Dolly Varden, and stickleback. The stream parallels the road, crosses over, then continues to parallel the road for approximately 200 ft until it veers away. Fish habitat likely continues but channel went dry due to low flow conditions (Table 1; Figures 1–4).

**Recommendations:** Add this uncataloged stream to the anadromous waters catalog for rearing coho salmon up to waypoint 325 (Figure 5).

**Nomination:** Pending

Table 1.–191-10-11400 tributary 2 survey data.

Waypoint	Latitude	Longitude	Notes	Stream Width ft	Stream Substrate	Habitat Features	Gradient %	Sample Effort	Sample Results
266	60.068664	-142.424466	Minnow trap soaked upstream of ford where channel parallels road. Channel veers away from road ~100 ft further upstream and goes mostly dry.		Small Gravel		1-2	MT	No Fish
286	60.068540	-142.423284	Electrofished for ~200 ft upstream of where channel veers away from roadside ditch. Only SB observed.		Fine Organic		1-2	EF	SB
287	60.068332	-142.422269	Channel goes dry at current flows.					EF	No Fish
325	60.068610	-142.424068	6 CO, 1 DV in minnow trap.					MT	6 CO 1 DV



Figure 1.–Juvenile coho salmon and Dolly Varden caught at waypoint 325.



Figure 2.—Channel with ponded water at waypoint 286.



Figure 3.—Looking downstream at waypoint 266.



Figure 4.—Water crossing the road at waypoint 266.

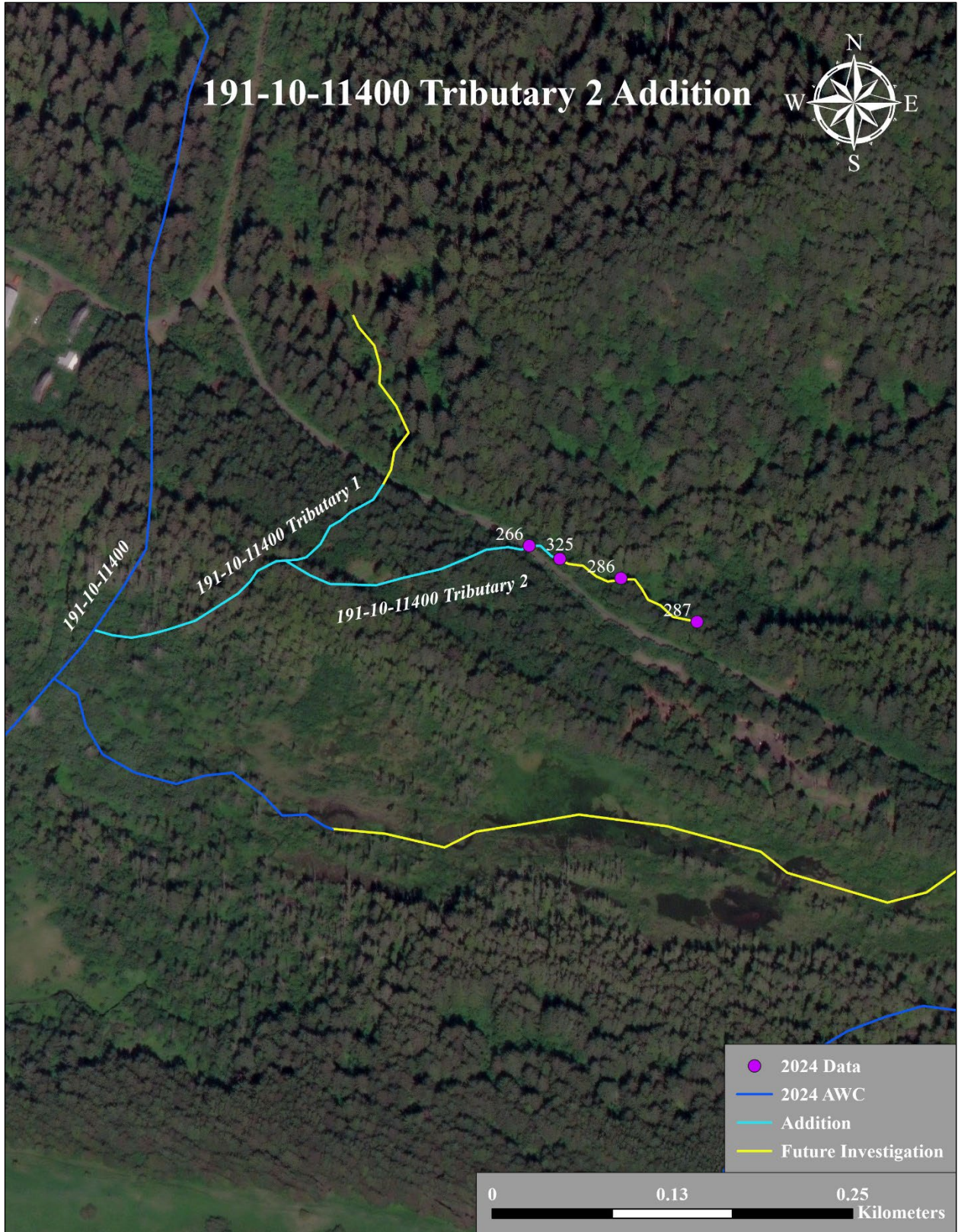


Figure 5.–191-10-11400 tributary 2 addition map.